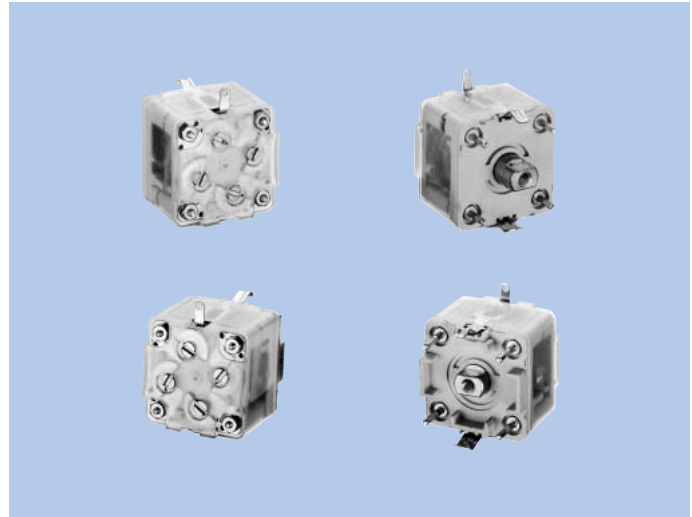


# Trackingless Type, For AM/FM 2-Band, AM Narrow-Band 20 mm, PVC-2LXT-L5, -2LXT-LD5

Polyvaricon

## FEATURES

These are AM/FM 2-band radio use POLYVARICONS. Improved electric and mechanical characteristics and superb quality control implemented make them highly satisfactory as high-grade variable capacitors.



## SPECIFICATIONS

Models	Uses	Mounting Form	Dimensions (mm)	Shaft Dimensions (mm)	No. of Stage	max. Capacitance Swing (pF)	min. Capacitance (pF)	Variable Coefficient Curve
2LXT-L5	AM/FM (2-band)	Front mounting	21×21×16.5	4-2	AM-2	(O) 82 (A) 140	3.8±1 3.4±1	C A
					FM-2	20 (40)	FC1 3.3±1 FC2 3.8±1	B
2LXT-LD5	AM/FM (2-band)	Dip soldering	21×21×19.5	(3.5) -3	AM-2	(O) 82 (A) 140	3.8±1 3.4±1	C A
					FM-2	20 (40)	FC1 3.3±1 FC2 3.8±1	B

## CHARACTERISTICS

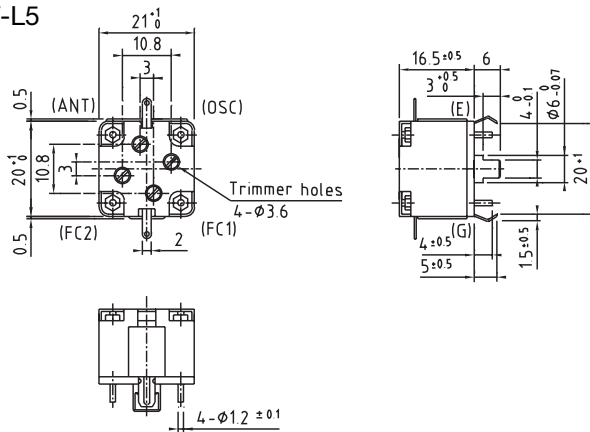
Item		Models	PVC-2LXT-L5/2LXT-LD5
Mechanical Characteristics	Shaft Rotational Direction		Capacitance decreases as shaft turned clockwise.
	Full Rotational Angle		97 <sup>+2</sup> <sub>-1</sub> % ( With semi-sphere 180° as 100%. )
	Rotational Torque		70~350g·cm
	Torque Difference		150g·cm or less
	Stopper Strength		9kg·cm (Breakdown strength)
	Trimmer Rotational Torque		50~400g·cm
Electrical Characteristics	Tolerance of Variable Capacitance		AM ± (1pF+1%) FM ± (0.3pF+2%)
	Q		AM 500 or more FM 200 or more
	Trimmer Capacitance		7pF or more
	MW Tuning Frequency Range		520~1650kHz

## Nominal Variable Coefficient Capacitance

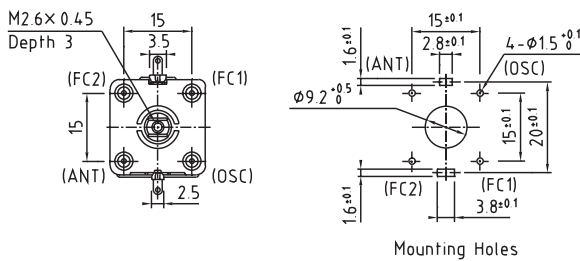
Rotational Index	%	100	90	82.8	75	70	60	50	42.6	30	25	17.5	10	(3)	Variable Coefficient Curve
Variable Capacitance (pF)	AM	82.0	73.8	66.8	58.9	53.5	42.4	31.8	24.5	14.3	10.9	6.44	2.71	0	C
	FM	140.0	118.2	101.3	84.0	73.2	53.2	36.7	26.6	14.3	10.6	6.01	2.44	0	A
		20.00	17.24	—	13.46	12.30	10.08	8.02	—	4.30	3.45	—	1.05	0	B

## DIMENSIONS

### PVC-2LXT-L5

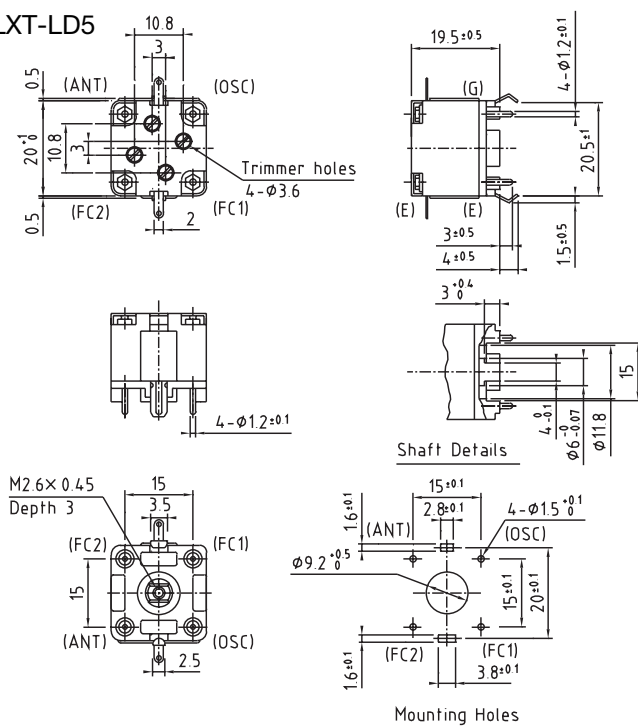


- ☆Flats of shaft located as shown max. capacitance.
- ☆Tolerance of shaft flat angle : Within ±2°.
- ☆Oscillator stage : AM (OSC), FM (FC1).



Unit : mm, Tolerance : ±0.2

### PVC-2LXT-LD5



- ☆Flats of shaft located as shown max. capacitance.
- ☆Tolerance of shaft flat angle : Within ±2°.
- ☆Oscillator stage : AM (OSC), FM (FC1).

Unit : mm, Tolerance : ±0.2